



# DATA CENTER 2.0

FOR TOPLINE 2009 AND THE ROX SERIES

**CONTENTS**

1 Preface ..... 3

2 The DATA CENTER 2.0 ..... 4

    2.1 Using SIGMA devices with DATA CENTER 2.0 ..... 4

    2.2 System requirements ..... 4

        2.2.1 Windows computer ..... 4

        2.2.2 MAC computer ..... 5

    2.3 Installation of the software ..... 5

        2.3.1 Installing on Windows computer ..... 5

        2.3.2 Installing on MAC computer ..... 5

    2.4 Activating software ..... 5

        2.4.1 Activating online ..... 6

        2.4.2 Activating offline ..... 6

    2.5 Connecting docking station ..... 6

    2.6 Icons for data types ..... 7

    2.7 LED display of the docking station ..... 7

3 Quick start ..... 8

    3.1 In 5 steps to the analysis ..... 8

    3.2 Interface description ..... 9

    3.3 Important icons and functions ..... 9

        3.3.1 Functions for all SIGMA devices ..... 9

        3.3.2 Functions for log analysis (ROX 9.0) ..... 9

4 Before the first trip ..... 10

    4.1 Set up new device ..... 10

        4.1.1 With docking station ..... 10

        4.1.2 Without docking station ..... 11

        4.1.3 Using docking station subsequently ..... 11

    4.2 Perform device settings with DATA CENTER 2.0 ..... 12

5 After The Trip ..... 13

    5.1 Transferring data to DATA CENTER 2.0 with the docking station ..... 13

        5.1.1 Transfer data from ROX devices ..... 13

        5.1.2 Transfer data from a TOPLINE 2009 device ..... 14

    5.2 Transferring data without docking station ..... 14

    5.3 Selecting trip ..... 15

        5.3.1 Select trip in calendar view ..... 15

        5.3.2 Selecting trip from the list view ..... 16

    5.4 Notes about the trip ..... 17

    5.5 Compare trips ..... 18

    5.6 Print out trip or save as PDF file ..... 18

    5.7 Exporting trip ..... 19

    5.8 Importing trip ..... 19

6 Statistics ..... 20

    6.1 Viewing statistics ..... 20

    6.2 Statistics interface ..... 20

    6.3 Deactivate trip or log for statistics ..... 21

    6.4 Total values ..... 21

        6.4.1 Updating and viewing total values ..... 21

**CONTENTS**

7 Filtering of data ..... 22

- 7.1 Filter functions ..... 22
- 7.2 Viewing filter settings ..... 22
- 7.3 Setting filters and applying without saving ..... 23
- 7.4 Saving filters ..... 23
- 7.5 Applying selected filter ..... 23
- 7.6 Changing filter ..... 24

8 Analysis of a Log ..... 25

- 8.1 Difference between trip and log ..... 25
- 8.2 Log interface ..... 25
- 8.3 Limiting value range ..... 26
- 8.4 Selecting values for chart ..... 26
- 8.5 Editing markers ..... 26
  - 8.5.1 Editing breaks ..... 27
  - 8.5.2 Inserting way point ..... 27
- 8.6 Printing log ..... 27
- 8.7 Comparing logs ..... 28
- 8.8 Exporting log ..... 28
- 8.9 Importing log ..... 29

9 Maintenance ..... 30

- 9.1 Checking battery status (only ROX) ..... 30
- 9.2 Deleting log memory (only ROX 9.0) ..... 30
- 9.3 Changing device settings and transferring to device ..... 31
- 9.4 Exporting device setting ..... 31
- 9.5 Importing device setting ..... 31

10 FAQ – Frequently Asked Questions ..... 32

Index ..... 33

**1 PREFACE**

Congratulations for having decided on a device from SIGMA SPORT® and want to use DATA CENTER 2.0. With DATA CENTER 2.0 you can analyse your trips and comfortably control your training success in the PC.

To quickly use the features of DATA CENTER 2.0 please read the software manual carefully. SIGMA SPORT® wishes you lots of fun and a successful training control with the DATA CENTER 2.0.

## 2 THE DATA CENTER 2.0

With the DATA CENTER 2.0 software you can analyse the data of your SIGMA device on your PC or Mac. There are three kinds of data:

- Trips
- Logs (only ROX 9.0)
- Settings

To make ideal use of this data with the software, we recommend the use of the optionally available docking station. With it you can directly exchange the data between your device and DATA CENTER 2.0.

### 2.1 USING SIGMA DEVICES WITH DATA CENTER 2.0

You can use DATA CENTER 2.0 with the following SIGMA devices:

- BC 509
- BC 1009 and BC 1009 STS
- BC 1609 and BC 1609 STS
- BC 1909 HR
- BC 2209 MHR
- ROX 8.0 and 9.0

If you own a docking station, your device will be automatically recognised and the values are imported to the software.

Without docking station you connect a SIGMA device manually. The DATA CENTER 2.0 will then show you only those functions which suit the selected type of SIGMA device. Transfer the values to the software with the keypad.

#### NOTE:

Please read the manual to find out which values are displayed and saved in your SIGMA device.

The following values are adopted with the docking station in the DATA CENTER 2.0:

- Accumulated total values of the device – for instance kilometres.
- Individual trips with all values recorded for the device – for instance the trip time.
- Logs for the ROX 9.0 – for instance the altitude profile of the distance.

In DATA CENTER 2.0 you can select the following options:

- View and print total values.
- View, compare and print individual trips and enter notes.
- View, compare and print logs for ROX 9.0 and enter notes.
- Display extensive statistics.
- With the docking station you can comfortably change device settings in DATA CENTER 2.0 and transfer them to the device.

## 2.2 SYSTEM REQUIREMENTS

### 2.2.1 WINDOWS COMPUTER

To use the software you require the following software and hardware.

#### Minimum

- Intel® processor of the Pentium® class with minimum 1 GHz
- 256 MB RAM
- Microsoft® Windows® 2000 with service pack 4, Windows XP with service pack 2, Windows Vista® or Windows 7

#### Recommended

- Intel® Processor of the Pentium® class with minimum 2 GHz
- 512 MB RAM; 32 MB VRAM
- Microsoft® Windows® 2000 with service pack 4, Windows XP with service pack 2, Windows Vista® or Windows 7

### 2.2.2 MAC COMPUTER

To use the software you require the following software and hardware:

- Intel Core™ Duo Processor at least 1.83 GHz or PowerPC® Processor G4 at least 1 GHz
- 512 MB RAM
- MacOS X Version 10.4.11, 10.5.4, 10.5.5 or 10.6

## 2.3 INSTALLATION OF THE SOFTWARE

### 2.3.1 INSTALLING ON WINDOWS COMPUTER

- ① You should close all running applications before the installation.
- ② Start the file **DataCenter2Setup.exe**.
- ③ Follow the installation instructions on the screen.
- ④ To execute DATA CENTER 2.0, Adobe Air Framework is required. This is automatically installed alongside.
- ⑤ Start the application.

### 2.3.2 INSTALLING ON MAC COMPUTER

- ① You should close all running applications before the installation.
- ② Start the file **DataCenter2Setup.exe**.
- ③ Follow the installation instructions on the screen.
- ④ To execute DATA CENTER 2.0, Adobe Air Framework is required. This is automatically installed alongside.
- ⑤ Start the application.

## 2.4 ACTIVATING SOFTWARE

The activation is required only once and can be carried out online and offline. You can start the DATA CENTER 2.0 30 times without activation. You are reminded of the activation each time the programme starts. As soon as you activate DATA CENTER 2.0, you can download new programme versions.

### 2.4.1 ACTIVATING ONLINE

For the activation you require the licence key that you received in the online shop or from the CD cover. You can always look up the licence key in the online shop.

- 1 Start the DATA CENTER 2.0. The window **Software activation** is displayed.
- 2 Click on **Online**.
- 3 Enter the licence key.
- 4 Click on **Continue**. After the successful authentication the application is activated.

**NOTE:**

If an error message is displayed, please check the entered licence key.

**TIP:**

As soon as you activate the software, you can also access new programme versions.

### 2.4.2 ACTIVATING OFFLINE

If you have no Internet connection, you can activate the DATA CENTER 2.0 offline. For the activation you require the licence key that you received in the online shop or from the CD cover. You can always look up the licence key in the online shop.

**TIP:**

As soon as you activate the software, you can also access new programme versions.

- 1 Start the DATA CENTER 2.0. The window **Software activation** is displayed.
- 2 Click on **Offline**.
- 3 Enter the licence key. You will receive a transfer key.
- 4 Click on **Print**. A PDF file is displayed that contains the transfer key and instructions for the offline activation.
- 5 Print out or save the PDF file.

### 2.5 CONNECTING DOCKING STATION

For the TOPLINE 2009 and the ROX series from SIGMA SPORT® a docking station is available. The docking station is included in the ROX 9.0 delivery contents. For all other devices a docking station can be purchased in addition. With the docking station you adopt the data of your SIGMA device to the DATA CENTER 2.0 and transfer device settings.



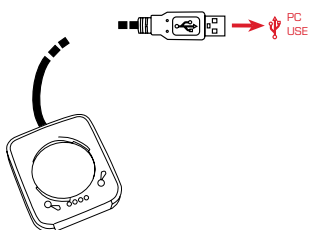
You connect the docking station to your computer via a USB port.

**IMPORTANT:**

Do you use Sony Ericsson PC Suite or Nokia PC Suite? Before you connect the docking station, close and deactivate the processes PCSuite.exe or SEPCSuite.exe and make sure that the DATA CENTER 2.0 is installed.

**Prerequisite:** Data Center 2.0 is installed.

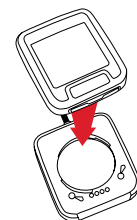
- 1 Connect the docking station to the USB port of your computer.



**NOTE:**

If you connect the docking station to a computer for the first time, it will be detected as new hardware and the driver is installed. You have to click on "agree" for installing the driver.

- 2 Turn the SIGMA device into the docking station.



- 3 Start DATA CENTER 2.0. The device is automatically detected and added to the device list. If the automatic detection doesn't work, please click on the button New device

2.6 ICONS FOR DATA TYPES



**Trip**  
Marks trips in lists, windows and in the calendar



**Log**  
Marks logs in lists, windows and in the calendar



**Setting**  
Marks the data for the device settings

2.7 LED DISPLAY OF THE DOCKING STATION

An LED display that gives you information about the docking station mode can be found on the front side of the docking station.

LED display of the docking station TOPLINE 2009

Docking station mode	LED is green	LED is red
Sleeping mode	Flashes	Off
Waiting for communication	On	Off
Communication with PC	On	On

LED display of the docking station ROX

Docking station mode	LED is green	LED is red
Sleeping mode	Off	On
Waiting for communication	On	Off
Communication with PC	Flashes	Off

## 3 QUICK START

The quick start offers the most important information on the DATA CENTER 2.0 to the experienced computer user. In five steps it brings you to the analysis, shows you the interface structure and explains important icons and functions.

### 3.1 IN 5 STEPS TO THE ANALYSIS

#### Without docking station

- 1 Start software.
- 2 Manually create SIGMA device.
- 3 Enter the values manually.
- 4 Select trip.
- 5 Analyse, compare, complement, print or export trip.



#### With docking station

- 1 Start software.
- 2 INSERT SIGMA device in docking station.
- 3 Import data.
- 4 Select trip or log.
- 5 Analyse, compare, complement, print or export trip or log.



Start screen



3.2 INTERFACE DESCRIPTION

Devices →

Devices menu →

Call up help and infos →

← Functions for the section

← Trip values, adapted to the type of device

← Additional trip values, sorted by sensors

Total values

3.3 IMPORTANT ICONS AND FUNCTIONS  
3.3.1 FUNCTIONS FOR ALL SIGMA DEVICES

- 

**Scroll backwards**  
Scroll to the previous view.
- 

**Export data**  
Export trips, logs and device settings.
- 

**Print**  
Print the displayed analysis - trip, log or statistics.
- 

**Compare values**  
Compare two trips or logs.
- 


**Set filters**  
Select filters, create new ones or delete existing filters for analyses in the trip data and Statistics section.
- 


**Global settings**  
Set measurement units, language, views.
- 


**Help**  
You can view the Data Center 2.0 manual as pdf.


3.3.2 FUNCTIONS FOR LOG ANALYSIS (ROX 9.0)

Logs can be saved additionally. Special functions are available for the analysis of the logs.

- 

**Show heart rate zones**  
The heart rate zones are shown as diagram.
- 

**Zoom X axis**  
Stretch the X axis and view individual sections more closely.
- 

**Change focus**  
You expand the data view and are able to see more data.
- 

**Select unit of the X axis**  
Select the distance or time for the X axis.

## 4 BEFORE THE FIRST TRIP

Before you start on your first trip, you should set up the device in DATA CENTER 2.0. With the docking station you can also check and change your device settings and re-import them to your SIGMA device.

### 4.1 SET UP NEW DEVICE

If you use a docking station, the DATA CENTER 2.0 automatically recognises, which SIGMA device was connected. You can directly import the data.

If you have no docking station, you have to set up the SIGMA device yourself in the DATA CENTER 2.0 and manually enter the data.

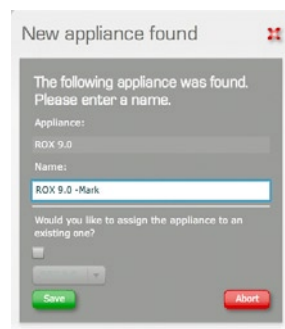
#### 4.1.1 WITH DOCKING STATION

The docking station connects your SIGMA device with the computer.

- You import the trip data and logs into the DATA CENTER 2.0.
- You maintain device settings in the DATA CENTER 2.0 and import them to your SIGMA device.

This is how you set up a new device with the docking station.

- 1 Start the DATA CENTER 2.0.
- 2 Connect the docking station with the computer.
- 3 Turn the device into the docking station, just like you do with the bracket of your bike. The DATA CENTER 2.0 automatically recognises your SIGMA device and displays a window.
- 4 Give a name to the device.
- 5 **Save** the new device.



#### NOTE:

You already use DATA CENTER 2.0 for your SIGMA device and have subsequently bought a docking station. The DATA CENTER 2.0 recognises your SIGMA device as a new device. You allocate the new device to an already set-up device, all existing data are retained.

4.1.2 WITHOUT DOCKING STATION

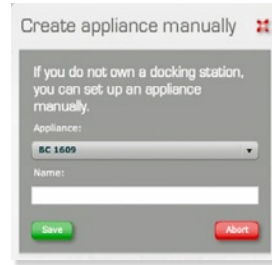
You have a SIGMA device without docking station. For that you can also use DATA CENTER 2.0. You manually set up your SIGMA device and transfer the trip data via the keypad.

This is how you set up a new device without the docking station.

- 1 Start the DATA CENTER 2.0.
- 2 Click on the **new device**.
- 3 Click on the button **Create manually**. The window **Create device manually** is displayed.
- 4 Select your device from the list.
- 5 Give a name to the device.
- 6 Click on **Save**. The new device is set up.

**TIP:**

If you want the data transfer to be more comfortable or faster, you can buy a docking station. You can buy the docking station in a retail store or at [www.sigma-data-center.com](http://www.sigma-data-center.com).



Docking station	Ref. number
BC 509, BC 1009, BC 1009 STS, BC 1609, BC 1609 STS	Ref. No. 00117
BC 1909 HR, BC 2209 MHR	Ref. No. 00118
ROX 8.0, ROX 9.0	Ref. No. 00116

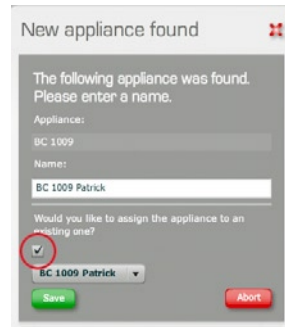
4.1.3 USING DOCKING STATION SUBSEQUENTLY

You can get a docking station for all SIGMA devices in retail stores or at [www.sigma-data-center.com](http://www.sigma-data-center.com). The trip data for your SIGMA device entered up to now only with the keypad will be retained. The new trip data that are now transferred by the docking station are allocated to the manually set-up device.

**Example:**

Patrick has already manually entered trip data for his SIGMA device BC 1009 in DATA CENTER 2.0 and now uses his newly bought docking station for the first time.

- 1 Start the DATA CENTER 2.0.
- 2 Connect the docking station with the computer.
- 3 Turn the SIGMA device into the docking station, just like you do with the bracket of your bike. DATA CENTER 2.0 automatically recognises your SIGMA device as new and checks if you have already set up devices of the same type.
- 4 Activate the check box. The drop-down menu for selecting the devices is enabled.
- 5 Select the device in the drop-down menu.
- 6 Click on **Save**. The data is imported.



**NOTE:**

If DATA CENTER 2.0 shows only one device of the same type, it is automatically entered.

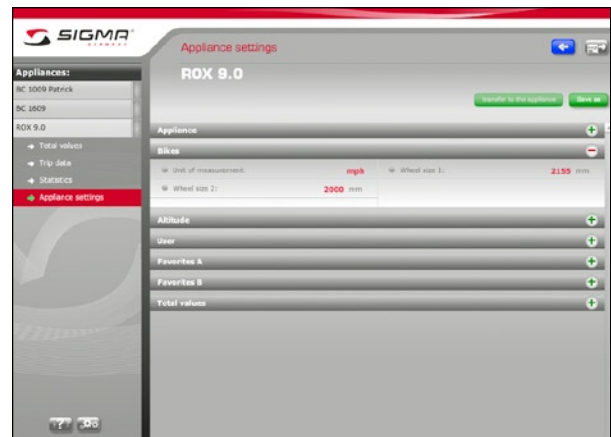
## 4.2 PERFORM DEVICE SETTINGS WITH DATA CENTER 2.0

With the docking station you can comfortably change device settings in DATA CENTER 2.0 and then transfer them to the device. The device settings can also be saved and exported as a file.

**Example:**

You have mounted your new SIGMA device on your bike and want to set the wheel size with DATA CENTER 2.0

- ❶ Start DATA CENTER 2.0.
- ❷ Connect the docking station with the computer.
- ❸ Turn the device into the docking station, just like you do with the bracket of your bike.
- ❹ Select the device.
- ❺ Select **device settings**.
- ❻ Click on the button **Load from device**. Your current settings are loaded.
- ❼ Click on the plus icon in the **bikes** section. The setting options are opened.
- ❽ Enter the value for your bike in the field **Wheel size 1**.
- ❾ Enter the desired settings in the other sections.
- ❿ Click on the button **Transfer to device**. The settings on your SIGMA device have changed.



*Device settings*

**TIP:**

This function is particularly useful, if you have a ROX and want to use several favourites. In this way you can set favourites for heart rate zone training, mountain or tempo trips in flat land and comfortably transfer them to the ROX.

### 5 AFTER THE TRIP

The values of your SIGMA device are imported to the programme with the docking station. All values recorded by your SIGMA device are displayed in the trip data section. There you expand your trip data with notes and can compare two trips.

The export function enables data exchange and backup. If you don't have a docking station yet, you manually set up your SIGMA device and enter the trip data.

#### 5.1 TRANSFERRING DATA TO DATA CENTER 2.0 WITH THE DOCKING STATION

If you have a docking station, you can simply transfer your device's data to DATA CENTER 2.0.

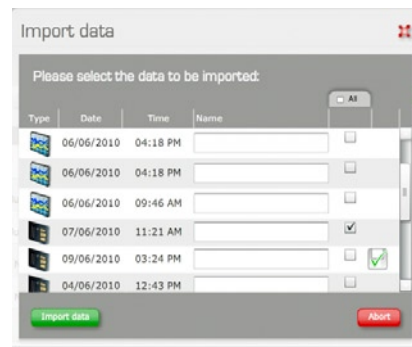
##### 5.1.1 TRANSFER DATA FROM ROX DEVICES

Your ROX can save up to seven trips. In addition you can record logs with your ROX 9.0. When importing data from your ROX to DATA CENTER 2.0, you can select the trips and logs that you want to transfer to the DATA CENTER 2.0.

**Example:**

You use a ROX 9.0 and want to transfer the trip dated 06/06/2010 to the DATA CENTER 2.0. The software has started and you have already connected the docking station to the computer. Your SIGMA device is turned in.

- ❶ Select the device.
- ❷ Click on **Trip data**. The **Trip data** section is displayed.
- ❸ Click on the button **Import data**. The data is loaded and the **Import data** window opens. You see the trips and logs that are saved on your SIGMA device. The green checks mark the trips and logs you have already imported.
- ❹ Mark the desired trip.
- ❺ Name the trip.
- ❻ Click on **Import data**. The trips and logs are transferred and shown in DATA CENTER 2.0.



**NOTE:**

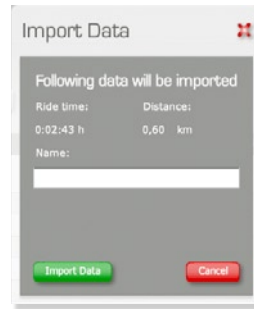
Is your last trip missing on the list? Check whether you ended the trip in the device. You can transfer trips and logs only once they have been ended.

5.1.2 TRANSFER DATA FROM A TOPLINE 2009 DEVICE

With the TOPLINE devices from SIGMA, you can record a trip and transfer it with the docking station to DATA CENTER 2.0.

The software was started and you have already connected the docking station to the computer. Your SIGMA device is turned in.

- 1 Select the device.
- 2 Click on **Trip data**. The **Trip data** section is displayed.
- 3 Click on the button **Import data**. The data is loaded and the **Import data** window opens.
- 4 Name the trip in the field **Name**.
- 5 Click on **Import data**. The data is imported and the **Details** window is displayed.



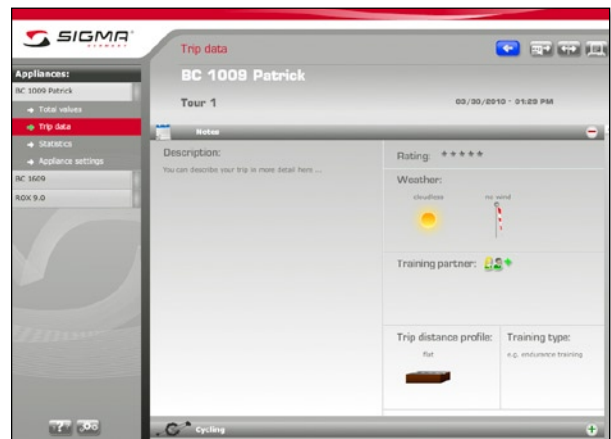
5.2 TRANSFERRING DATA WITHOUT DOCKING STATION

Even if you don't own a docking station, you can analyse your trips with DATA CENTER 2.0. For this purpose, you can create your trips manually and enter the data via the keypad. If you buy a docking station later on, you can still use the manually entered trips.

**Example:**

You want to analyse the last trip in DATA CENTER 2.0. The software has already started. You have your SIGMA device ready.

- 1 Select the device.
- 2 Click on **Trip data**. The **Trip data** section is displayed.
- 3 Click on the button **Create trip**. The **Create trip** window is displayed.
- 4 Name the trip.
- 5 Click on the button **Create trip**. The trip details are displayed.
- 6 Fill in the fields.
- 7 Click on the plus in the **Cycling** section.
- 8 Transfer the values like distance and time from your device. The DATA CENTER 2.0 saves the values automatically at once.



Trip data

**TIP:**

In the **Note** section, enter additional information about the trip.

5.3 SELECTING TRIP

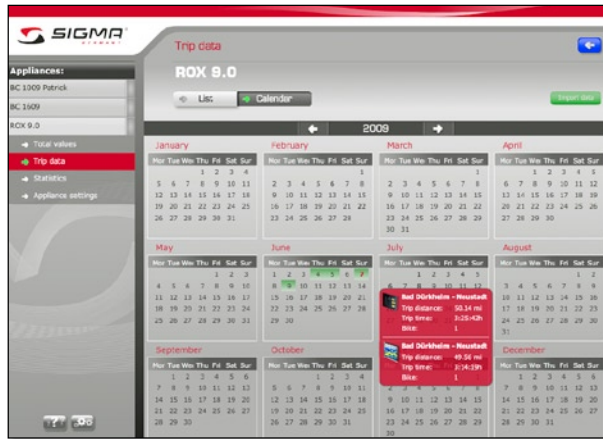
You can select trip data in the list or calendar view.

TIP:

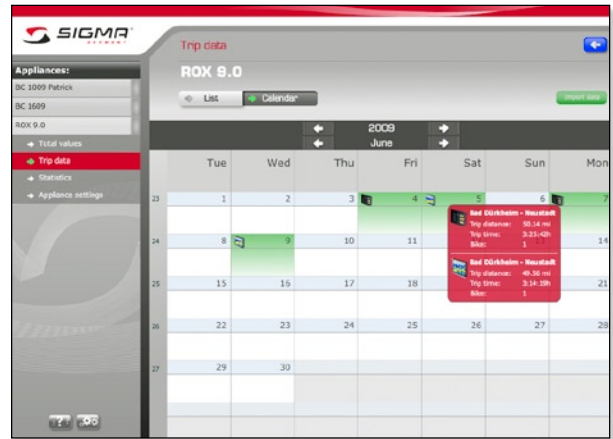
You can set a standard view below the options down on the left side.

5.3.1 SELECT TRIP IN CALENDAR VIEW

In the calendar view, you initially see the latest yearly view. You can select another year or look more closely at one month. Both views are interactive:



Yearly view



Monthly view

- With the arrows you can scroll between the years.
- Days with trip or log data are highlighted in grey.
- When you move to a date highlighted in grey, its data is displayed.
- When you click on the month, you change over to monthly view.

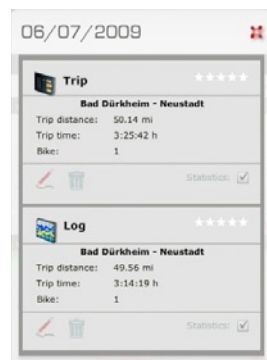
- If data for a day exists, that day is highlighted in colour.
- When you move to a coloured field, you see the data for the day.
- When you click on that day, you can see the selection of data.
- When you move to the number of weeks, you can see distance and time of the week.

Example:

You have a ROX 9.0 and have recorded a trip and logs on 7 June 2009. You want to select that trip from the calendar view.

You have already transferred that data to the DATA CENTER 2.0.

- 1 Select the device.
- 2 Click on **Trip data**. The list view of the trip data is displayed.
- 3 Select **Calendar**. The calendar view is displayed.
- 4 Click on **June 07**. A selection window with all data for this day is displayed.
- 5 When you click on the pencil, the trip data is displayed.



TIP:

You can also display the trip data with a double click.

5.3.2 SELECTING TRIP FROM THE LIST VIEW

You can also display and select trips and logs in a list view.

In the list view you have the following options:

- You can sort the list by name, date, distance, time or bike.
- You can show the dates of trips or logs.
- You can activate or deactivate trips or logs for the statistics.
- You can delete trips and/or logs.

**Example:**

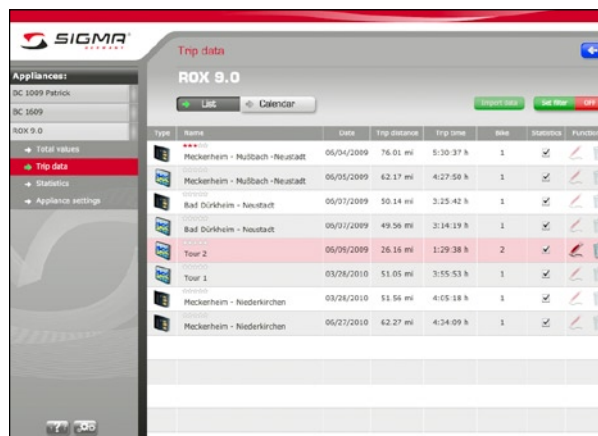
You have a ROX 9.0 and have recorded a trip and logs on 6 June 2009. You want to select that trip from the list view.

You already transferred that data to the DATA CENTER 2.0.

- 1 Select the device.
- 2 Click on **Trip data**. The trips are displayed in the list view.
- 3 The trip data is shown by double clicking on the **Trip** dated **6 June 2009**.

**TIP:**

Use the filter function to find trips or logs faster.



List view in the Data section



Trip data



5.4 NOTES ABOUT THE TRIP

Besides the pure performance data from a trip, it is also possible to record information about the weather, its profile or its intensity.

**Example:**

You want to add notes about the trip. The DATA CENTER 2.0 is active.

**Enter notes**

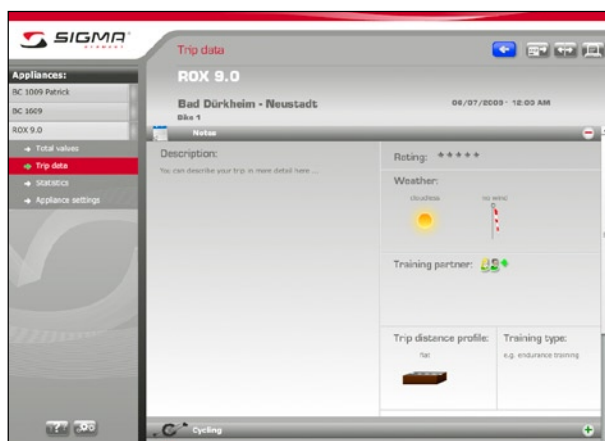
- 1 Select the device.
- 2 Click on **Trip data**. The list view of the trip data is displayed.
- 3 Select a trip from the list or the calendar view.
- 4 Open the **Notes** section.
- 5 Enter the notes. The notes are saved automatically.

**This is how you work in the Notes section.**

- **Entering notes**  
You enter a text with the trip description or special events.
- **Creating training partner**  
Click on the plus icon next to the training partner and add a new training partner.
- **Deleting training partner**  
Move your mouse over a training partner, then you can delete or modify him/her.
- **Entering training type**  
Enter the training type.
- **Allocate weather, route profile and analysis**  
When you click on the corresponding section, a selection is displayed. Select the suitable analysis.

**TIP:**

Enter the notes soon after the trip, so that you remember all relevant information.



Trip data - Notes

5.5 COMPARE TRIPS

The trip comparison enables you to compare two trips. For this purpose, it doesn't matter with which SIGMA device the trips are recorded. Therefore you can also import and compare the trips of training partners, friends and acquaintances.

**Example:**

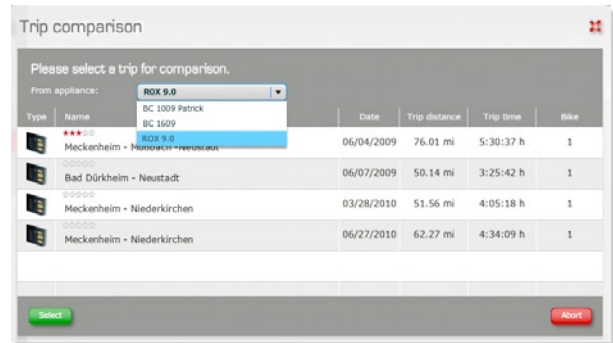
You have made a trip at the beginning of the season after a lengthy training and now want to compare the two trips to see how effective the training was.

- ❶ Select the SIGMA device from the device list.
- ❷ Click on **Trip data**. The list view of the trip data is displayed.
- ❸ Select the trip. The trip details are displayed.
- ❹ Click on the button **Compare**.



This opens a window for trip selection.

- ❺ Select the corresponding SIGMA device in the drop-down menu. The relevant trips are listed.
- ❻ Select the trip with a double click. Both trips are shown side by side, so that you can compare values.



5.6 PRINT OUT TRIP OR SAVE AS PDF FILE

You can print out individual trips or export them as PDF file. For this purpose, all the data and notes from a trip are merged.

- ❶ Select the device.
- ❷ Click on **Trip data**. The list view of the trip data is displayed.
- ❸ Select a trip from the list or calendar view. The trip is displayed.
- ❹ Click on the **Print** function. The print preview is shown as PDF file.



- ❺ Print out or save the PDF file.

5.7 EXPORTING TRIP

To save your data or compare trips, you can export individual trips in various data formats.

Data format	Exporting	For
smf	Data and notes	<ul style="list-style-type: none"> <li>→ Trip comparison</li> <li>→ Data saving</li> <li>→ Transferring trips to a new computer</li> </ul>
csv	Only data	<ul style="list-style-type: none"> <li>→ Importing to spread sheet</li> <li>→ Importing into a third-party software</li> </ul>

**Example:**

You have participated in a competition together with a teammate. Your teammate wants to compare trips. For that you export the trip as smf file.

- ❶ Select the device.
- ❷ Click on **Trip data**.
- ❸ Select a trip from the list or calendar view. The trip is displayed.
- ❹ Click on the **Export** function. A window opens.
- ❺ Select the **File type** "smf".
- ❻ Select the memory location.
- ❼ Enter a suitable name in the **File name** field.
- ❽ Click on **Save**. The trip is exported with all data and notes.

5.8 IMPORTING TRIP

All trips that you export as smf file can be re-imported into DATA CENTER 2.0.

**Example:**

You have installed DATA CENTER 2.0 on a new computer and have already exported all trips on the old computer. Now you want to import the trips. You already have set-up the devices in the new installation.

- ❶ Start DATA CENTER 2.0.
- ❷ Select **External data**. The file selection window is displayed.
- ❸ Select the file for import. The **Import data** window is displayed.
- ❹ Name the file.
- ❺ Allocate a device to the file.
- ❻ Click on **Import**. The file is imported and the trip is allocated to the selected device.



6 STATISTICS

The DATA CENTER 2.0 offers you two statistics. In the total values section you can see the most important statistical data of all recorded trips. In the Statistics section you can compile your own statistics.

6.1 VIEWING STATISTICS

In the Statistics section you have predefined setting options. These provide you with different ways of looking at your trips and logs.

**NOTE:**

You can look at different value areas depending on the selected device type. A separate statistics is undertaken for each set-up device.

This is how you call up the statistics:

- ① Select the device.
- ② Click on **Statistics**.
- ③ Select the graphical view **Statistics graph** or the value table **Statistics table**.

6.2 STATISTICS INTERFACE

Statistics - graphical view

Scroll back and forth →

Select time axis →

Select values →

Adapted to device type

← Functions for statistics

← Switching filter on/off

← Bar chart

← Compare bike 1 or 2 or add up bikes' values  
Adapted to device type

In the Statistics section you can choose between a value table and a graphical view. In both views you have the following options:

- You filter by specific values.
- Print out the displayed statistics.
- Choose between several time axes – week, month, year.
- They show different values like distance and time.
- Compare two bikes with some SIGMA devices.

### 6.3 DEACTIVATE TRIP OR LOG FOR STATISTICS

When you import data into DATA CENTER 2.0, all trips are activated for statistics by default. Logs are automatically deactivated and not included in the statistics. You can activate and deactivate individual trips and logs for the statistics. There are two views for this function:

- **List view**  
Device > Trip data > List > Check box in the Statistics column
- **Calendar view**  
Device > Trip data > Calendar > Month > Day > Check box statistics

**TIP:**

If you have a trip as well as a log from a trip, you should only use the trip for the statistics.

**Example:**

If you only want to see your training trips in the statistics, you can deactivate all your leisure trips.

- 1 Select the device.
- 2 Click on **Trip data**. The list view of the trip data is displayed. In the **Statistics** column all trips and logs that are entered in the statistics are marked by a check mark.

Typ	Name	Datum	Strecke	Ride Time	Fahrrad	Statistik	Funktionen
Familienausflug	Familienausflug Deidesheim	27.03.2010	15,36 km	3:25:42 h	1	<input type="checkbox"/>	
Meckenheim - Niederkirchen	Meckenheim - Niederkirchen	28.03.2010	82,16 km	3:55:53 h	1	<input checked="" type="checkbox"/>	
Meckenheim - Niederkirchen	Meckenheim - Niederkirchen	28.03.2010	82,99 km	4:05:18 h	1	<input checked="" type="checkbox"/>	

- 3 Click on the check mark for the leisure trip. The check mark is removed and the trip is not entered in the statistics.

### 6.4 TOTAL VALUES

In the total values section you see the accumulated data for each individual device.

#### 6.4.1 UPDATING AND VIEWING TOTAL VALUES

As soon as you have connected the docking station to the PC, you can update the total values for a device.

- 1 Start DATA CENTER 2.0.
- 2 Turn the device into the docking station.  
The status **connected** is displayed for the device.
- 3 Click on the device.
- 4 Select **Total values**.
- 5 Click on the button **Update**. The total values are updated.

**NOTE:**

The button is active only if the docking station is connected.

## 7 FILTERING OF DATA

Over time more and more trip data and logs accumulate in DATA CENTER 2.0. You can use filters in the Statistics section and in the list view of the trip data.

### 7.1 FILTER FUNCTIONS



#### Setting filters

You can select filters, create new ones or delete existing filters for analyses in the trip data and the Statistics sections.



#### Selected filter is applied

When you click on the button, you switch off the filtering.



#### Filter is switched off

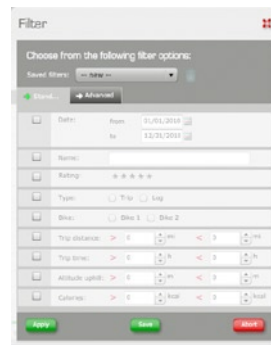
When you click on the button, you switch on the filtering.

### 7.2 VIEWING FILTER SETTINGS

You can use filters in the Statistics section and in the list view of the trip data.

- 1 Select the **device**.
- 2 Click on **Trip data > Lists** or on **Statistics**.
- 3 Select the button **Set filter**. The **Filter** window is displayed.

- In the drop-down menu **Selected filters**, select and apply a filter.
- Save new filters.
- Change existing filters.
- Set any selection and apply without saving.

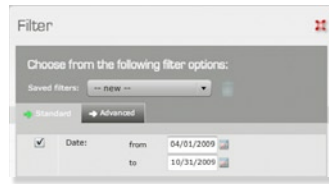


7.3 SETTING FILTERS AND APPLYING WITHOUT SAVING

**Example:**

You only want to list trip data that you undertook between 1 April 2009 and 31 October 2009.

- 1 Select the device.
- 2 Click on **Trip data**. The list view of the trip data is displayed.
- 3 Click on the button **Set filter**. The **Filter** window is displayed.
- 4 Activate the check box in front of **Date**. The date entry is shown as active.
- 5 Click on the field **From**.
- 6 Set year and month with the arrow buttons.
- 7 Click on 1 April. The date is adopted.
- 8 Set the date in the field **Till**.
- 9 Click on the button **Apply**. The list view of the filtered trip data is displayed. The filter is set on **ON**.



Type	Name	Date	Trip distance	Trip time	Bike	Statistics	Functions
Meckenheim	Meckenheim - Müllbach - Neustadt	06/04/2009	76.01 mi	5:30:37 h	1	<input checked="" type="checkbox"/>	
Meckenheim	Meckenheim - Müllbach - Neustadt	06/05/2009	62.17 mi	4:27:50 h	1	<input checked="" type="checkbox"/>	
Meckenheim	Bad Dürkheim - Neustadt	06/07/2009	50.14 mi	3:25:42 h	1	<input checked="" type="checkbox"/>	

**TIP:**

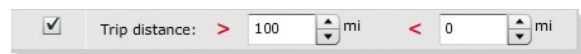
Save a filter that you use very frequently. You can then select it whenever you want.

7.4 SAVING FILTERS

**Example:**

You frequently want to look at your trips above 100 kilometres. For it, you want to save a filter. The trip data is displayed in the list view.

- 1 Click on the button **Set filter**. The **Filter** window is displayed.
- 2 In the drop-down menu select **Saved filters > New**.
- 3 Activate the check box **Distance**. The distance entry is shown as active.
- 4 Enter > 100.



- 5 Click on the button **Save**. The **Name filter** window is displayed
- 6 Select a meaningful name.
- 7 Click on **Save**.
- 8 When you click on **Apply**, the filtered list view is displayed. The filter is switched on.

7.5 APPLYING SELECTED FILTER

**Example:**

You have saved a filter for bike 1 and only want to see the total values of bike 1 in the statistics.

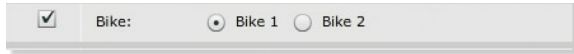
- 1 Select the device.
- 2 Select **Statistics**.
- 3 Click on the button **Set filter**.
- 4 In the drop-down menu **Saved filter**, select the filter **Bike 1**.
- 5 Click on **Apply**. In the statistics only the data of bike 1 is now shown in the total values.

## 7.6 CHANGING FILTER

**Example:**

You have a filter for distances of over 100 kilometres. You want to apply the filter for bike 1. The trip data is displayed in the list view.

- ❶ Click on the button **Set filter**. The **Filter** window is displayed.
- ❷ In the drop-down menu **Saved filters** select the filter.
- ❸ Activate the check box **Bike**. The bike entry is shown as active.
- ❹ Activate **Bike 1**.



- ❺ Click on **Save**.
- ❻ When you click on **Apply**, the filtered list view is displayed. The filter is switched on.



8 ANALYSIS OF A LOG

As the owner of a ROX 9.0 you save trips as well as logs. With the help of the logs you can display and analyse your performance on the bike in great detail. The graphical view of the altitude profile and the option to show and hide individual

parameters are helpful. Logs can be exported and edited further in other applications.

8.1 DIFFERENCE BETWEEN TRIP AND LOG

A trip contains all **cumulative values** from the beginning of the recording until the trip is manually ended in the SIGMA device. After that a new trip starts. Most SIGMA devices have memory space for one trip. The ROX series has memory space for seven trips and the ROX 9.0 can additionally record logs. In the log **individual values** are saved in specific intervals. The values are later shown as a curve in the DATA CENTER 2.0 analysis. The memory capacity for the individual values depends on the log interval (see device manual).

A log is started and ended manually in the device. You can log an entire trip or only partial sections of a trip.

NOTE:

Only completed trips and logs can be transferred from the device to the software.

8.2 LOG INTERFACE

The screenshot shows the 'Trip data' interface in the SIGMA Data Center 2.0 software. On the left, there is a 'Devices' menu with options like 'Total values', 'Trip data', 'Statistics', and 'Appliance settings'. The main area displays a multi-line chart with altitude, speed, heart rate, and temperature. A red vertical line highlights a specific point on the chart, with a data box showing values like Speed: 33.81 mph, Trip distance: 14.14 mi, and Heart rate: 100 bpm. Below the chart is a 'Register' table with columns for 'Info', 'Total values', 'Average', 'Min/Max values', 'Markers', and 'Notes'. The register shows values for speed (km/h), wheel size (mm), log time interval, number of log entries, start time, calories, bike, date, and stop time. On the right side of the screenshot, there are four arrows pointing to specific features: 'Functions for the section', 'Log diagram and chart options', 'Register for data view', and 'Data on the register'.

The interface of the diagram is interactive. You have the following options:

- **Highlighting curve in the chart**  
When you move the mouse over a curve, it is displayed in bold.
- **Changing Y axis**  
With one click on a curve, the appropriate unit for the curve is shown next to the Y axis.

**Example:**  
Switch the unit from altitude (m) to heart rate (bpm).

- **Showing values at curve points**  
With a double click at any place in the diagram you select one point in the curve. It is shown as a vertical line. When you move the mouse on the red line, the values at this point are shown. When you reposition the line with the mouse, you show a different point in the curve progression.
- **Chart option**  
You can minimise the **Chart options** window and reposition it within the diagram.

### 8.3 LIMITING VALUE RANGE

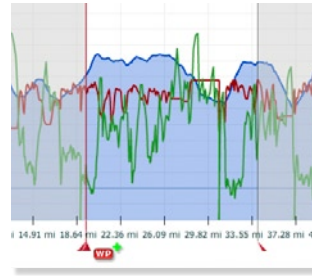
You can also analyse partial sections of a log in the log view. Due to this limitation the values in the lower section also change, and now they relate only to this limited value range.

**Example:**

You only want to analyse a specific ascent.

- ❶ Open the corresponding log file.
- ❷ Click on the red slider to the left and drag it with pressed-down mouse button to the beginning of the ascent.
- ❸ Drag the right slider to the end of the ascent. Now parts of the diagram are greyed out.

All data in the registers shown below relate now only to the light section between both sliders.



**TIP:**

Use the zoom function, to enlarge the value area, see "Functions for log analysis (ROX 9.0)", point 3.3.2.

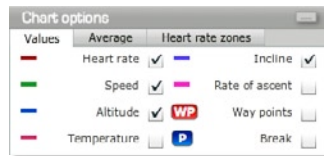
### 8.4 SELECTING VALUES FOR CHART

You have selected a log and now want to compare only specific values as curves in the chart. In DATA CENTER 2.0 you can show and hide the values as well as way points and breaks and in addition average lines and heart rate zones.

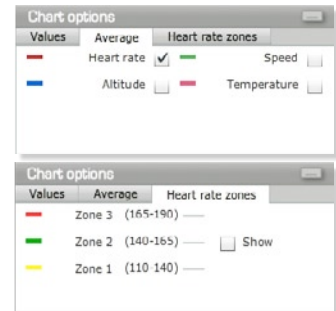
**Example:**

You did a mountain training trip with your racing bike. Later you want to compare heart rate, speed, altitude and incline in the chart. The diagram should in addition also show the average heart rate and the heart rate zones.

- ❶ In the **chart options** activate the **values** to be shown in the chart.
- ❷ Switch to the tab **Average**.



- ❸ Activate **Heart rate**.
- ❹ Switch to the tab **Heart rate zones**.
- ❺ Activate **Show**. The heart rate zones are shown in the background of the diagram.



**TIP:**




The choice in the chart options affects the print. The print shows only what you have selected here.

### 8.5 EDITING MARKERS

If you record logs during your trip, breaks are automatically detected by your device and registered in the log. Way points are selected manually in the device or later transferred to DATA CENTER 2.0.

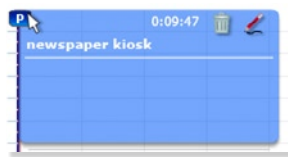
**Example:**

You want to enter more detailed information about one break and set a way point later. The log is already displayed.

-  Editing marking
-  Delete marking
-  Set way point later

### 8.5.1 EDITING BREAKS

- ① When you move the mouse over the break marker, a blue flag is displayed.
- ② Click on the icon **Edit marking** and enter the information.
- ③ Click on **Save**.



### 8.5.2 INSERTING WAY POINT

- ① Double click on the position where you want to set a way point.
- ② Click on the icon **Then set way point**. The **Edit** window opens.
- ③ Enter a name and other remarks on the way point.
- ④ Click on **Save**.

**TIP:**

You can also edit breaks and way points in the register **Markings**.

### 8.6 PRINTING LOG

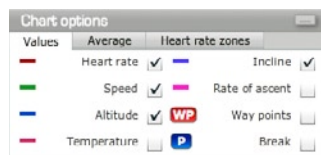
You can print out selected values from logs or save them as PDF. Only the values that you see on the screen are printed. So, you must first select the values you want to print in the chart options.

**Example:**

You did a mountain training trip with your racing bike. Afterwards you want to print out the values for heart rate, speed, altitude and incline.

- ① Select a device.
- ② Click on **Trip data**.
- ③ Select a log from the list or calendar view. The log is shown.
- ④ Activate in the **chart options** the **values** that should be shown in the printout
- ⑤ Click on the **Print** function. A print preview is shown as a PDF file.
- ⑥ Select the button **Print**.

- ⑦ Set the page to be printed.
- ⑧ Click on **OK**.



**TIP:**

You can also save the PDF file.

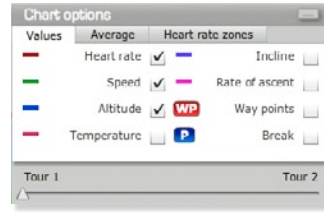
### 8.7 COMPARING LOGS

You can compare two logs of your own and also one of your own logs with an imported log. Logs are exported in the slf format.

**Example:**

You rode up one ascent with one teammate. You both have recorded a log of the ascent and now want to compare the values. You already transferred your log to DATA CENTER 2.0. You received the exported log "test ride.slf" from your teammate's ROX 9.0 and imported it.

- 1 Open your log file of the ascent.
- 2 Click on the function **Comparison**.
- 3 Select the device to which you allocated the imported log.
- 4 Select the log of the training partners with a double click. Both charts are superimposed. In the lower section the values are compared.



**TIP:**

With the slider in the **Chart options** window, you can set the chart that should be highlighted more.

### 8.8 EXPORTING LOG

To save your data and compare logs, you can export individual logs in various data formats.

Data format	Exporting	For
smf	accumulated data	→ Log is exported as trip
slf	Individual values, way points, breaks and notes	→ Comparing logs → Saving data → Transferring logs to a new computer
csv	Individual values	→ Importing to spread sheet → Importing to a third-party software

**Example:**

You rode up one ascent with one teammate. You both have recorded a log of the ascent and now want to compare the values. For it, export the log as a slf file.

- 1 Select the device.
- 2 Click on **Trip data**. The list view of the trip data is displayed.
- 3 Select a log from the list or from the calendar view. The log is shown.
- 4 Click on the **Export** function.
- 5 Select the **File type** "slf".
- 6 Select the memory location.
- 7 Enter a suitable name in the **File name** field.
- 8 Click on **Save**. The log is exported with all data, way points and breaks.

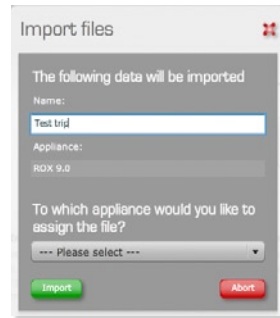
## 8.9 IMPORTING LOG

All logs that you export as slf file can be re-imported as log to DATA CENTER 2.0.

### Example:

You rode up one ascent with one teammate. You both have recorded a log of the ascent and now want to compare the values. Your teammate gives you his exported log "test trip."

- ❶ Start DATA CENTER 2.0.
- ❷ Select **External data**. The file selection window is displayed.
- ❸ Select the slf file for import. The **Import data** window is displayed.
- ❹ Name the file.
- ❺ Allocate a device to the file.
- ❻ Click on **Import**. The file is imported and the log is allocated to the selected device. Now the log is available to compare the values.



### TIP:

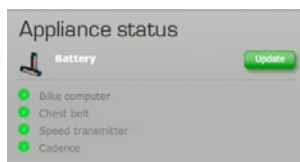
You can also add a new device.

## 9 MAINTENANCE

You should check the battery status of the individual components at regular intervals. You can do this comfortably with the docking station in DATA CENTER 2.0. If you use a ROX 9.0, you should regularly delete the log memory.

### 9.1 CHECKING BATTERY STATUS (ONLY ROX)

- 1 Connect your ROX to the computer.
- 2 Click on **Update**.



You see an overview of the current battery status. In this example the first three batteries are in order, the battery of the cadence transmitter has to be replaced.

#### NOTE:

Please read the device manual on how to change the battery.

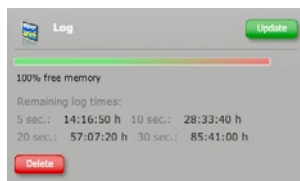
### 9.2 DELETING LOG MEMORY (ONLY ROX 9.0)

You can save several logs with the ROX 9.0. The capacity of the log memory depends on the selected recording intervals (5-10-20-30 sec.). If the memory is full, no more logs can be recorded.

#### Example:

You want to delete the log memory of a longer trip. You have already connected the docking station to your computer and turned into your SIGMA device. The DATA CENTER 2.0 has also started.

- 1 Select the SIGMA device.
- 2 Click on **Update**. You can see the current status of the log memory in the overview. You see how much log memory is available at the various log timings.



- 3 Click on **Delete**. All logs are deleted from your SIGMA device after one query.

#### CAUTION:

Only delete the log memory, if you are sure that you have transferred all logs to your computer. View the trip data and click on the button Import data. Control the trips and logs. Files without the check mark have not been imported yet.

### 9.3 CHANGING DEVICE SETTINGS AND TRANSFERRING TO DEVICE

You can directly change the device settings in the device or via the DATA CENTER 2.0. How to directly change the device settings in the device can be found in the manual of your SIGMA device. You can see in the following example how to change the settings in DATA CENTER 2.0.

**Example:**

You have a new bike with a wheel size different from your previous one. The DATA CENTER 2.0 is started and the docking station is connected with the device.

- 1 Select the device you want to use with the new bike.
- 2 Click on the button **Load from device**.
- 3 Switch to the section **Bikes**.
- 4 Enter the different wheel size.
- 5 When you click on the button **Transfer to device**, the setting is saved in the device.

### 9.4 EXPORTING DEVICE SETTING

The device settings that you saved in DATA CENTER 2.0 can be exported as ssf file.

**Example:**

You have specifically compiled and saved your favourites for your ROX 9.0. Your teammate also has a ROX 9.0 and asks you for the device settings. You export the device settings as ssf file and give the file to your teammate.

- 1 Select a SIGMA device.
- 2 Click on **Device settings**.
- 3 Select the device setting from the list. The device settings are displayed.
- 4 Click on the **Export** function.
- 5 Select "ssf" as **File type** "ssf".
- 6 Select the memory location.
- 7 Enter a suitable name in the **File name** field.
- 8 Click on **Save**. The device settings are saved as ssf file.

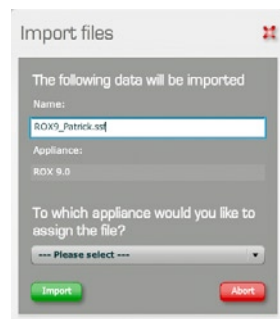
### 9.5 IMPORTING DEVICE SETTING

The device settings are exported as ssf file and can be re-imported.

**Example:**

You received a specific device setting as ssf file from your teammate and now want to import it to DATA CENTER 2.0.

- 1 Start DATA CENTER 2.0.
- 2 Select **External data**. The file selection window is displayed.
- 3 Select the ssf file for import. The **Import data** window is displayed.
- 4 Name the file.
- 5 Allocate a device to the file.
- 6 Click on **Import**. The file is imported and the device settings are allocated to the selected device.



**10 FAQ – FREQUENTLY ASKED QUESTIONS**

**I cannot connect the ROX to the PC (LED docking station flashes red).**

- Check whether the main menu is shown in the display of the connected SIGMA device.  
If not, view the main menu.
- Check if the SIGMA device is correctly turned into the docking station.

**I cannot connect the ROX to the PC (LED docking station flashes green).**

- Check if the mobile phone software **Sony Ericsson PC Suite** or **Nokia PC Suite** are installed on your computer.
- If so, please quit and deactivate the processes PCSuite.exe or SEPCSuite.exe.

**Where is the data saved on the PC?**

- Data is saved under **My documents > SIGMADataCenter2**.



## INDEX

<b>A</b>		<b>L</b>	
Activating software	5, 6	LED display	7
<b>C</b>		Log	
Checking battery status	30	Comparing logs	28
Comparing data		Deactivating for statistics	21
Comparing trips	13, 18	Definition	25
Comparing values	9, 18, 28, 29	Deleting log memory	30
Connect ROX to DATA CENTER 2.0	4, 32	Functions of log analysis	9
<b>D</b>		Import	29
Data		Log analysis	9, 26
Data types	7	Log interface	25
From ROX devices	13	Printing log	27
From TOPLINE 2009 devices	14	Setting chart	
With docking station	8, 10	Average line	26
Without docking station	11, 14	Deleting marking	26
DATA CENTER 2.0		Editing break	27
Analysing data	8, 14	Editing marking	26, 27
Installing programme	5	Heart rate zones	26
Memory location of data in the PC	32	Inserting way point	27
Using SIGMA devices	4	Limiting value range	26
Data export		Selecting chart options	26
Exporting device setting	31	Selecting values for chart	26
Exporting log	28	Transferring from ROX 9.0	13
Exporting trip	19	<b>N</b>	
Saving as PDF	18, 27	New device in the programme	
Data import		Setting up with docking station	10
Importing data	8, 10, 13, 14, 30	Setting up without docking station	11
Importing device setting	31	Notes	
Importing log	29	About the trip	17
Importing trip	13, 14, 19	Adding training partner	17
Device setting		Add marking	26
Changing device setting	31	Analysing trip	17
Exporting device setting	31	Deleting training partner	17
Importing device setting	31	<b>S</b>	
Performing device settings with DATA CENTER 2.0	12	Statistics	
Docking station		Comparing bikes	20
Connecting	6	Display	20
LED display	7	Excluding trip or log from statistics	21
Purchasing later	11	Print	20
Transferring data from a TOPLINE 2009 device	14	Selecting time axis	20
Transferring data from ROX devices	13	Selecting values	20
Using later	10, 11	Viewing accumulated total values	21
<b>F</b>		<b>T</b>	
FAQ	32	TOPLINE 2009	6, 7, 14
Filter		Trip	
Applying filter	23	Comparing trips	18
Changing filter	22, 24	Deactivate for statistics	21
Filter functions	22	Definition	25
Saving filter	22, 23	Export	19
Functions		Filter	22, 23, 24
For all SIGMA devices	9	Import	19
For log analysis (ROX 9.0)	9	Notes	17
<b>I</b>		Print	18
Icons for data types	7	Save as PDF	18
Interface			
Basic structure	9		
Log	25		
Statistics	20		